

# KANE9206

## Quintox Flue Gas Analyser & Emissions Monitor



Independently tested by TÜV SUD to: EN50379

ZERO TIME 91m

CO2	0.0%	NETT	-3.6deg C
HC	0ppm	LOSS	---
CO	0ppm	DRY	---
NO	0ppm	WET	0.0%
NO2	0ppm	CO LOSS	0.0%
NOx	0ppm	F INDEX	0.00%
SO2	0ppm	CO/CO2 R0	0.000
H2S	0ppm	EXHAUST	0.00%
O2	20.80%	SAIR	0244%
FLUE	23.84%	C PRESSURE	0.02bar
INLET	-10F-deg C	ATM	1022.7mbar
AMBIENT	27.9deg C	CPS CO	-00011.619
16:13:32		11/06/14	506



### QUINTOX



# Invest in your future

# KANE9206 Quintox Flue Gas Analyser & Emissions Monitor

The KANE9206 Quintox is a modular system & the standard kit provides the platform to build a complete solution to suit your specific monitoring application. All the options available are listed below ensuring that you are provided with exactly what you need.



Wireless connectivity



Independently tested by TÜV SUD to EN50379 the new KANE9206 Quintox is a cost effective & versatile emissions monitoring solution. Customised to your specific requirement the KANE9206 Quintox uses electro-chemical sensors to monitor Carbon Monoxide, Nitrogen Dioxide, Nitric Oxide, Sulphur Dioxide, Hydrogen Sulphide, and Oxygen. Combine up to five electro-chemical sensors with our infra-red measurement technology to monitor Carbon Monoxide (up to 10%), Carbon Dioxide & Hydrocarbons.

## Key features include:

- Large Graphical Display
  - Up to 15 lines of text/data can be displayed
- Wireless link from the handset to the base unit
  - Offering cable free connection
- GPS Location
  - Pinpoint exact test location
- Wireless & USB Connection to PC
  - Use the KANE LIVE software to monitor readings in "real time"
- Large internal memory
  - Can store up to 64,000 tests
- Main Purge
  - Allows sensor zeroing without the need to withdraw the probe from the flue
  - Refreshes the sensors during long term monitoring
  - Automatically protects the sensors from being over-ranged.
- Active Flow Control
  - Compensates for sample pressure fluctuation & filter blocking by adjusting the pump speed to maintain a set sample gas flow rate
- Built in Printer with additional output to optional portable IR Printer
  - IR printer ideal when working away from the base unit



## 1. The KANE9206 Quintox Standard Kit

KANE9206 Standard Kit Includes: Handset, Base Unit & Power Supply

Measures	O <sub>2</sub> 0-25%	CO (H <sub>2</sub> Compensated) 0-10000ppm	CO <sub>2</sub> (calculated) 0-20%	Temperature 0-1100°C	Pressure 0-150 mbar	Efficiency 1-100%
----------	-------------------------	---	---------------------------------------	-------------------------	------------------------	----------------------

## 2. Select additional sensor options

The Quintox can be fitted with any combination of up to five additional electro-chemical sensors plus one complete infra-red module

Optional Sensor Upgrades	NO (Hi Range) 0-5000ppm KNO1H/Q	NO (Lo Range) 0-100ppm KNO1L/Q	NO <sub>2</sub> 0-1000ppm KNO2/Q	SO <sub>2</sub> (Hi Range) 0-5000ppm KSO2H/Q	SO <sub>2</sub> (Lo Range) 0-100ppm KSO2L/Q	H <sub>2</sub> S 0-1000ppm KH2S/Q
Electro-Chemical Sensors						
Infra-Red Module KHC/Q	CO 0-10%	HC 0-5000ppm	CO <sub>2</sub> 0-20%	Please note: if Infra-Red Module KHC/Q is fitted, the Hi/Lo CO Protection Solenoid & Pump KHPURQ is also required. See below for more details.		

## 3. Select a probe

Depending on your requirement a selection of high quality stainless steel probes with integral thermocouples are available  
Hi-Temp = 1100°C/2140°F Standard Temp = 600°C/1112°F

Optional Probes	Hi Temp Probe 1 metre removable shaft KMCHLP6	Hi Temp Probe 285mm removable shaft KMCHP6	Hi Temp Smoke Probe 1 metre removable shaft KMCHSLP6	Hi Temp Smoke Probe 285mm removable shaft KMCHSP6	Smoke Probe 285mm removable shaft KMCSPP6	Professional Probe 1 metre removable shaft KMCLP6	Professional Probe 285mm removable shaft KMCP6
-----------------	--	---	--	---	--	---	--

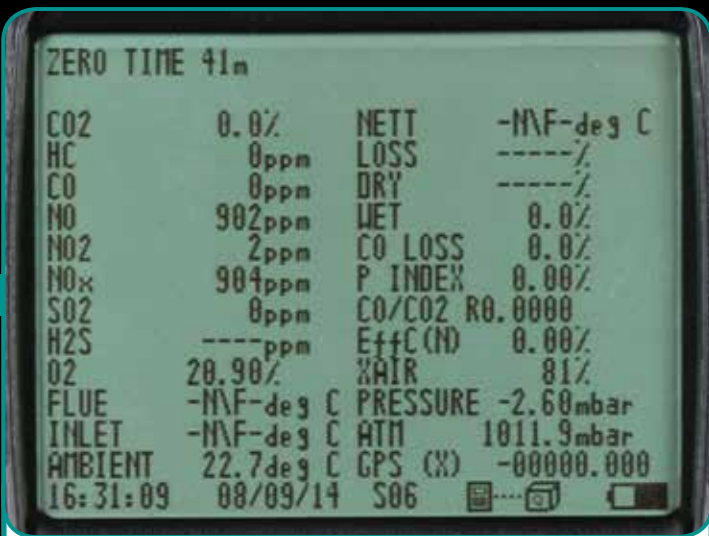


## 4. Optional upgrades

Used in conjunction with the heated probe & heated line, the sample conditioning unit comprises: a peltier fan cooled chiller assembly, a peristaltic pump to automatically remove condensate, the control electronics & power supply module



Sample Conditioning Unit KMDM110/230	Heated Probe KMHP1200	Heated Line KMHL3000
Hi/Lo CO Protection Solenoid & Pump KHPURQ Must be used with Infra-Red Module KHC/Q	Hi/Lo purge protection allows a standard ppm sensor to be fitted providing accurate readings at below 20ppm. When approaching over-range the solenoid operates & switches the gas flow to the electro-chemical sensor from flue gas to fresh air. The pump is then used to flush out the CO sensor & protect it from over-range. CO readings continue to be taken using the CO channel of the Infra-Red Module KHC/Q	
Pumped Water Trap WTS9206P	The pumped water trap empties itself on a regular basis & so protects the analyser from condensate overflow, this allows long term unattended monitoring	
Heater - Toxic Sensors KHSA	Enables toxic sensors to operate effectively at below 0°C ambient temperature. The heater maintains temperature at +5°C	



**Main Measurement Screen:**

**Top line:**

Shows status messages

**Gases:**

O2 & CO2 are shown in %

Other gases shown in ppm or other user selected units

CO can be shown in % if optional IR bench fitted

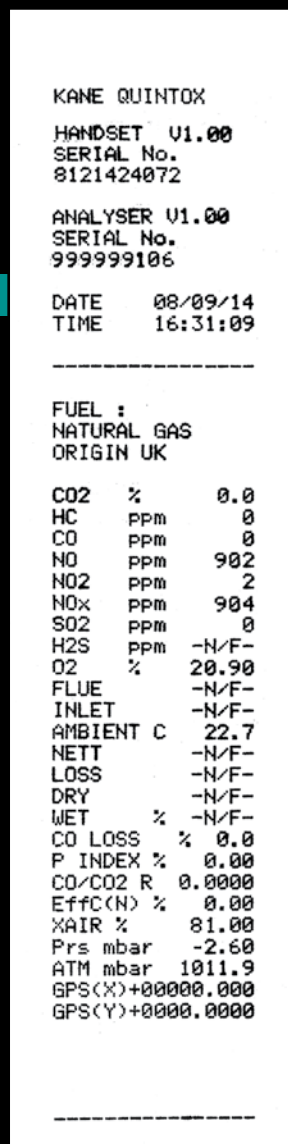
**Temperature:**

Displayed in °C or °F. N/F = not fitted

**Atmospheric Pressure (ATM):**

Is always displayed in mbar

When a calculation cannot be made due to an out of range value ----- will be displayed



**Printed Reports:**

Produce comprehensive printed reports via integral printer, optional IR printer, or send full report directly to an Android™ Phone



**Wireless connectivity**

Transfer live analyser readings to your PC or Android™ Phone using the “KANE LIVE” software or “Printer App for Android™” downloaded **FREE**

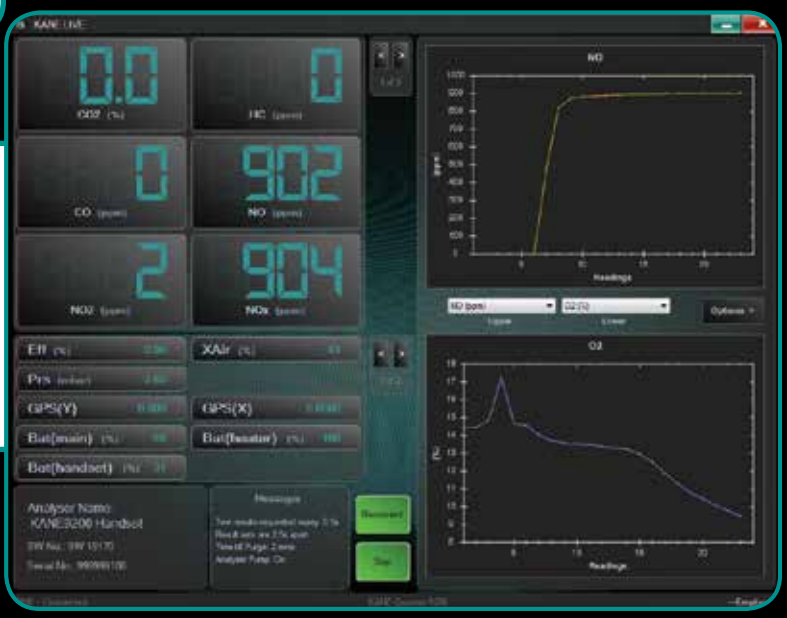
SALE AND SUPPORT BY:



Excellence in Measurements...

+91-11-41717112 / 13 / 14 / 15

sales@nevcoengineers.com



**THE KANE9206 QUINTOX IS A MODULAR SYSTEM & PRICING IS ON APPLICATION FOR MORE DETAILS PLEASE CALL US NOW**